

DINING FURNITURE

CLEM



THE SOFA & CHAIR COMPANY  
LONDON

## FABRIC INFORMATION



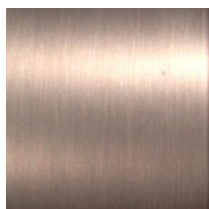
LEATHER\*



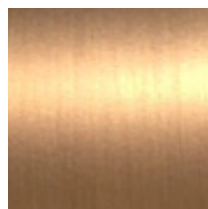
FABRIC\*

\*Visionnaire have a selection of Fabrics and Leathers available in their collection. Please speak to a sales consultant for further information. COM also available.

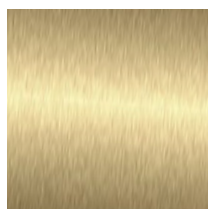
## METAL FINISHES (LACQUERED STEEL)



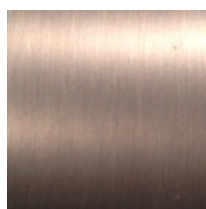
NICKEL



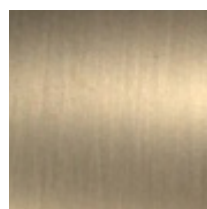
BRONZE



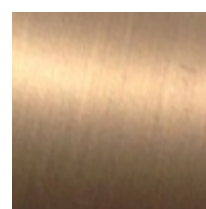
GOLD



GUNMETAL



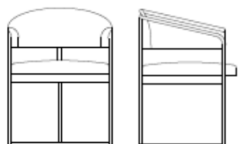
CHAMPAGNE



SIENA

## CLEM CHAIR

### QTY INFORMATION



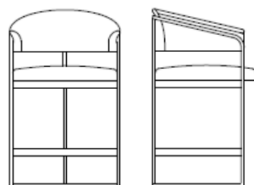
**W60 x D59 x H77 (Dining Chair)**

**FABRIC**

1.7m

**LEATHER**

2.8sqm



**W60 x D59 x H96 (Bar Stool)**

**FABRIC**

1.7m

**LEATHER**

2.8sqm

## CLEM DINING CHAIR

MR-CLEM-CHA-001-001

W60 x D59 x H77

## CLEM BAR STOOL

W60 x D59 x H96

SUPPLIER: Italian

BESPOKE: No bespoke dimensions

LEAD TIME: 13 Weeks

\*Lead times may vary, particularly during Summer & Christmas shut down periods.

PRICES MAY VARY DEPENDENT ON FINISH



THE SOFA & CHAIR COMPANY  
LONDON

T 02 089 934415 F 02 089 931863

UNIT 1 WESTERN AVENUE BUSINESS PARK LONDON W3 0BZ  
INFO@THESOFAANDCHAIR.CO.UK WWW.THESOFAANDCHAIR.CO.UK